

# A LA COUR D'ALSACE



## SUMMARY

The elegant hotel is only 25 km South of Strasbourg. Exposed beams and works of art form the backdrop for what promises to be an exceptional stay. In this enchanting setting, the rooms are comfortable and well equipped.

## KEY FEATURES

In the centre of Obernai  
Restaurant  
Sp and indoor pool



# A LA COUR D'ALSACE

## ROOMS & SUITES

### A LA COUR D'ALSACE – STANDARD ROOM



The Classic Room offers either a queen bed or twin beds.

Room Size: 16 sqm  
Max Occupancy: 2 adults



#### MAIN ROOM FEATURES:

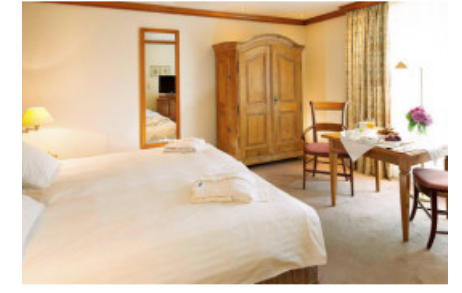
Bathroom with shower | Desk | Flat-screen TV | Free toiletries | Hair Dryer | Heating | Minibar | Safe | Satellite channels | Soundproofing | Telephone | WiFi

-  Twin beds
-  Double bed

### A LA COUR D'ALSACE – MEDIUM ROOM



Medium Room offers a double bed or twin beds with views of the hotel's courtyard.

Room Size: 20 to 25 sqm  
Max Occupancy: 2 adults



#### MAIN ROOM FEATURES:

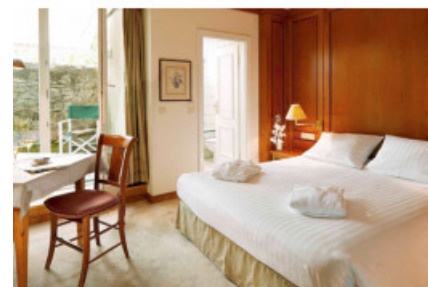
Bathroom with shower | Desk | Flat-screen TV | Free toiletries | Hair Dryer | Heating | Minibar | Safe | Satellite channels | Soundproofing | Telephone | WiFi

-  Twin beds
-  Double bed

### A LA COUR D'ALSACE – SUPERIOR ROOM



The Superior Room include access to the hotel's spa. The room also features views of the courtyard and garden.

Room Size: 15 to 20 sqm  
Max Occupancy: 2 adults



#### MAIN ROOM FEATURES:

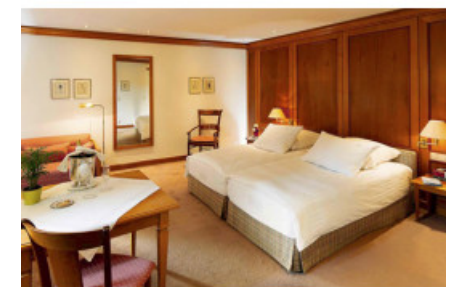
Bathroom with shower | Desk | Flat-screen TV | Free toiletries | Hair Dryer | Heating | Minibar | Safe | Satellite channels | Soundproofing | Telephone | WiFi

-  Twin beds
-  Double bed

### A LA COUR D'ALSACE – DELUXE ROOM



The Superior Room include access to the hotel's spa with. The room also features views of the courtyard and garden.

Room Size: 20 to 30 sqm  
Max Occupancy: 2 adults



#### MAIN ROOM FEATURES:

Bathroom with shower | Desk | Flat-screen TV | Free toiletries | Hair Dryer | Heating | Minibar | Safe | Satellite channels | Soundproofing | Telephone | WiFi

-  Twin beds
-  Double bed

### A LA COUR D'ALSACE – PREMIUM ROOM



An air-conditioned room with direct access to the hotel's spa. The room also features views of the courtyard and garden.

Room Size: 20 to 25 sqm  
Max Occupancy: 2 adults



#### MAIN ROOM FEATURES:

Air-Conditioning | Bathroom with shower | Desk | Flat-screen TV | Free toiletries | Hair Dryer | Heating | Minibar | Safe | Satellite channels | Soundproofing | Telephone | WiFi

-  Twin beds
-  Double bed

### A LA COUR D'ALSACE – JUNIOR SUITE



The beautiful Junior Suite features a double bed or twin beds with a lounge area. Includes direct access to the hotel's spa.

Room Size: 30 sqm  
Max Occupancy: 2 adults



#### MAIN ROOM FEATURES:

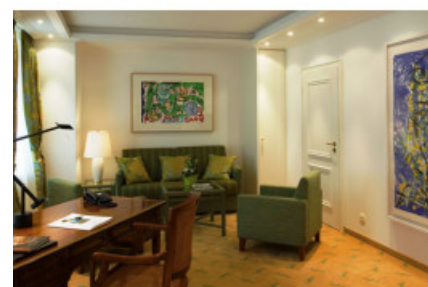
Air-Conditioning | Bathroom with shower | Desk | Flat-screen TV | Free toiletries | Hair Dryer | Heating | Minibar | Safe | Satellite channels | Seating area | Soundproofing | Telephone | WiFi

-  Twin beds
-  Double bed

### A LA COUR D'ALSACE – DUPLEX




The Duplex Room includes a lounge with sofa bed on the ground floor, bedroom (double bed or twin beds) and bathroom on the first floor.

Room Size: 39 sqm  
Max Occupancy: 2 adults



#### MAIN ROOM FEATURES:

Air-Conditioning | Bathroom with shower | Desk | Flat-screen TV | Free toiletries | Hair Dryer | Heating | Minibar | Safe | Satellite channels | Seating area | Soundproofing | Telephone | WiFi

-  Sofa Bed
-  Twin beds
-  Double bed

# A LA COUR D'ALSACE

---

## AMENITIES & SERVICES

2:30 pm

Check-in time:

12:00 pm

Check-out time:

- 24-hour front desk
- Air conditioning
- Bar
- Babysitting/child services
- Currency exchange
- Garden
- Terrace
- Sauna
- Indoor pool
- Lift
- Restaurant
- Room service
- Luggage storage
- Laundry and dry cleaning
- Non-smoking rooms
- Free WiFi



# A LA COUR D'ALSACE

## GALLERY

---

